

## **Historic, Archive Document**

Do not assume content reflects current scientific knowledge, policies, or practices.



62.27

LIBRARY  
RECEIVED  
★ OCT 7 1957 ★  
U. S. Department of Agriculture

1942

*Price List*



CHOICE --- HARDY

SELECTED

IRISES

from the

*Fleur De Lis*

*Gardens*

C. W. TOMPKINS

*Visit Our Gardens*

at

3110 Lakeport Road

Phone 67621

Sioux City, Iowa

## SELECTED AND NEWER INTRODUCTIONS

ADA LYONS (Callis 41) Pink Bicolor. 40''	\$ 8.00
ALZA HOLA (Snyder 42) Pale cloudy blue, washed gold edge 36''	25.00
ANNA ELVIRA NASH (Callis 41) Rose Pink Self. 40'' Fine ..	7.00
ANN NEWHARD (W.-N. 40) Blue Purple Bicolor. Late. 38'' ..	2.50
AZTEC COPPER (Kleinsorge 39) Lovely smokey violet, copper	5.00
BACHELOR GIRL (Callis 41) White and Rose Plicata .....	7.00
BRIGHT MELODY (Snyder 40) Concord Grape. 38''. Fine ....	10.00
BUCKSKIN (Klein 39) A fine large Buckskin colored self. 40''	2.00
CHARLOTTE MILLET (Cay. 38) Fine bright reddish Lilac. 38''	3.50
CONESTOGA (Kirk. 37) A bright copper red blend. 38'' .....	2.00
DUBROVNIK (Wmsn. 38) Brilliant brownish copper red. 38'' ..	1.25
E. B. WILLIAMSON (Cook 37) Almost a red self. One of best .	1.00
ELSA SASS (H. Sass 39) Sulphur Lemon self. Superb. 36'' ...	5.90
FAIR ELAINE (Mit. 38) S. Cream. F. Clear Pinard Yellow. 40''	3.50
FLORA CAMPBELL (Hill 40) Warm red brown self. 38'' ....	3.00
GLAMEROUS NIGHT (W-N, 40) Mulberry, tobacco brown. 40''	4.00
GOLDEN SPIKE (Whiting 40) Superb top notch yellow. 38'' ..	15.00
GILT EDGE (Whiting 41) Clear lemon edged Empire yellow. 40''	5.00
INDIAN LOVE CALL (Salb. 38) Deep brownish red Bitone ...	1.00
IOWA GLORY (Snyder 42) Rich maroon red self .....	2.50
KANSAS INGLESIDE (Hill 40) Coppery red self that glows. 36''	1.00
KANSAS SUNRISE (Hill 40) Vivid gold, red variegata blend. 32''	1.00
LATE SUN (DeForest 39) Superb bright yellow. 40'' .....	5.00
LOUVOIS (Cayeux 36) Best dark brown we have ever seen. 35''	1.50
MATTERHORN (J. Sass 38) The finest white self. 38'' .....	2.50
MELANIE (Hill 40) a fine new pink. 45'' .....	3.00
MOKI (Thole 38) Red brown Bicolor .....	1.00
NYLON (Whiting 40) A superb and mammoth rosy tan. 36'' ..	5.00
PRAIRIE SUNSET (Sass H. 39) Beautiful Sunset colors. ....	10.00
PRISCILLA (Whiting 42) The much discussed pure white. 24''	5.00
RAEJEAN (Whiting 40) A very fine late two-toned yellow. 38''	5.00
RED BONNET (Gage 39) One of best reds we have grown. 38''	3.50
RED VELVET (Klein 38) A fine red, very velvety and a self ..	3.50
ROUGE BOUQUET (Whiting 41) Red hues from copper to purple	5.00
RUTH POLLOCK (H Sass 39) Ruffled gigantic yellow plicata ..	5.00
SEA BLUE (Whiting 41) A fine clear blue. 36'' .....	10.00
SETTING SUN (Kirk 27) A Kirkland red verging on black red	3.00
SNOQUALMIE (Brehm 38) A fine large cream colored Iris. 38''	1.50
VAGABOND PRINCE (Sass J. 40) A fine, black purple self. 36''	1.50
WABASH (Wmsn 36) Best of Amoenas S. White F. Deep Violet	1.00
WITCHING HOUR (Wash. 38) Soft yellow. Falls netted at haft	1.00

## GENERAL LIST OF FINE IRIS

ALICE HARDING. Charming primrose yellow self. 40'' .....	.25
AMENTI. Large ruffled pale pink and yellow blend. 36'' .....	.25
AMIGO. Best all blue amoena. A really fine Iris. 30'' .....	.75
AMITOLA. Rose and gold blend with overlay of lavender. 38''	.25
ANGELUS. Beautiful pearly pink blend. Very fine. 38'' .....	.75
AT DAWNING. Beautiful lavender and pink bicolor. 40'' ....	.25
AVONDALE. A large flaming strawberry copper red. 38'' ....	.25
BLENHEIM. Large fine red with lighter standards. 38'' .....	.50
BUECHLEY'S GIANT. Huge silky light blue. 42'' .....	.50
BLUE DANUBE. Fine bright blue self from England. 38'' ....	.35
BLUE TRIUMPH. A large superbly branched light blue. 44'' ..	.25
BLUE VELVET. Fine medium blue. 38'' .....	.15
BONSOR. A really blue blue. Superbly finished. 38'' .....	1.50
BRUNHILDE. The best of the intense blue violets. 38'' .....	.50
BURNING BRONZE. A glowing bronzy red. 40'' .....	.25
BUTTERSCOTCH. A lovely tan Iris. Well finished. 36'' .....	.25
CALIFORNIA GOLD. Orange yellow self. Tall, well branched	.25
CATHEDRAL DOME. Large smooth pure white. Fine. 40'' ...	1.00
CHEERIO. A famous tall red bicolor. 40'' .....	.25
CHINA MAID. A real pink with smooth overtones. 42'' .....	.75
CHRISTABEL. Tops of the coppery reds. 40'' .....	.60
CITY OF LINCOLN. THE variegata. Gold S. Bronze red F. 42''	1.75
CLARIBEL. Snow white stitched bright blue. Large. 40'' ....	.35
CLINTON SYLVESTER. Cream peach edged magenta red. 40''	.50
COPPER LUSTRE. The first of the coppers. Very large. 38'' ..	.50
CORALIE. Rosy bicolor with deeper falls, 36'' .....	.25
CORINTHE Really fine, bishops blue. 38'' .....	1.00
CORONET. Soft golden tan with a rosy overlay. 38'' .....	1.00
CREOLE BELLE. A deep satiny purple. 38'' .....	.25
CRIMSON TIDE. Almost an Oxblood red. Rounded flowers. 42''	3.00
CYDALISE. Yellow and brown plicata. Flaring form. 32'' ....	.20

CYDNUS. Giant flowered blue bicolor. 38''	.15
DAUNTLESS. A time tested and famous first red. 40''	.25
DEPUTE NOMBLOT. Fine copper bronze. 42''	.25
DIRECTEUR PINELLE. Deep wine purple overlaid black. ....	.25
DORE. Yellow standards creamy white falls. Unusual. 38''	.35
DYMIA. A fine deep purple. Much admired. 38''	.25
EASTER MORN. Fine snow white. Sometimes tender. 38''	.35
ECLADOR. Fine soft crisp looking yellow. 36''	.25
EL CAPITAN. Fine older blue. A good show flower. 40''	.25
E. EGELBERG. Tall bluish pink, flaring form. 42''	.15
EILAH. Tall soft yellow. Strap like falls. 38''	.25
ELLA WINCHESTER. Mahogany red self. Large falls. 36''	.25
ELKHART. Wine red overcast brownish purple. Many flowers.	.25
ETHEL PECKHAM. Brilliant rich red. 38''	.75
FAR WEST. Large pinkish gray and cloudy blue blend. 40''	.50
FASCINATION. Smooth bright pink. Sturdy. 38''	.25
GARDEN MAGIC. Among the best reds. 36''	1.00
GAUCHO. Brilliant red and yellow variegata. 34''	.25
GLORIOLE. Pale blue with frost sheen. Hard to beat. 40''	.26
GOLDEN HIND. A really deep yellow. Brilliant. 36''	.50
GOLDEN TREASURE. Mammoth cream and gold. A treasure.	.50
GRACE LAPHAM. An orchid pink centered white on falls. 40''	.25
GREAT LAKES. A top notch flaring blue. Very fine. 44''	1.50
GUDRUN. Giant white short stalks but mammoth flowers. 34''.	.25
HAPPY DAYS. An all round good yellow. Very good. 40''	.25
HELIOS. Tall fine yellow dark on haft. 40''	.25
HIDALGO. Tall light lavender blue of flaring form. 40''	.25
JASMANIA. A banana yellow, large and fine. 40''	.50
JEAN CAYEUX. Lovely copper tan. 36''	.25
JEAN LA FITTE. Fine strong strawberry red bicolor. 40''	.25
JONATHAN. Large dark purple red. 38''	.25
JOYANCE. Soft cream white with a glowing gold center. 38''	.20
JOYCETTE. Glowing live red of fine form and substance. 42''	.25
JUNALUSKA. Rich deep red with a soft shining copper center.	.50
KALINGA. Soft glowing cream. Large flower of fine form. 42''	.35
LADY PARAMOUNT. Gigantic primrose yellow. 42''	.25
LARGO. A fine well branched wine red. 38''	.15
LIGHTHOUSE. Showy rosy red and gold blend. 36''	.50
LILAMANI. Silky blue black of fine size and form. 38''	.50
LOS ANGELES. The top notch white and blue plicata. 44''	.25
MACAROON. Odd shade of red brown. Interesting. 36''	.25
MALUSKA. Very large black red. 38''	.25
MARCO POLO. Rose standards with crimson brown falls. 38''	.25
MARISHA. Large superb pink blend. 40''	.50
MARQUITA. Large cream with falls striped strawberry. 38''	.35
MATI HARI. Late large blue purple. 40''	1.00
MATULA. Large blend of rose and apricot gold. 40''	3.00
MAYA. Tall red with copper marked haft. 40''	.25
MICHAELANGELO. Large flowered elephant gray. 40''	.50
MIDWEST GEM. Pale creamy yellow and pink blend. 40''	1.00
MISS CALIFORNIA. Tall lilac rose, almost pink. 48''	.75
MISSOURI. King of the medium blues. 42''	.35
MISSOURI NIGHT. Fine medium blue. Touch of brown at haft	1.00
MOHRSON. Gigantic violet hybrid from Wm. Mohr. 36''	1.00
MONADNOCK. Tall rosy lavender. Very fine. 40''	1.00
MOONGLO. A golden copper blend undertoned blue. 36''	.25
MRS. J. L. GIBSON. A deep violet blue, velvety texture. 38''	.25
NARAIN. Very fine tall clear blue. 40''	.35
NARANJA. The famous "Orange" Iris. 38''	.35
NASSAK. White stitched with deep bright blue. 40''	.50
NOWETA. A very ruffled and much loved pink. 36''	.25
OREGON GIANT. A giant dark blue black. 38''	.15
ORIANA. A faultless smooth rounded white. 30''	.20
ORLOFF. A showy yellow plicata edged reddish brown. 36''	.75
OSSAR. A rather small but a really glowing red self. 32''	.25
OZONE. Soft grey blue touched copper at the haft. 36''	.35
PINK IMPERIAL. Very large and very tall soft pink. 48''	1.00
PALE MOONLIGHT. A shining pale blue. 38''	.25
PATRICIA. A flaring heavily ruffled clear white. Lovely. 38''	1.50
PERSIA. A really fine soft blue bicolor darker falls. 38''	.25
PINK SATIN. A famous and fascinating soft pink. 40''	.15
RADIANT. Very brilliant copper red. Almost orange. 36''	1.00
RED GLOW. Tall glowing red. 40''	.25
RED ROBE. A very fine red. 38''	.15
RED WING. Another tall flaring red. 40''	.15
ROSY WINGS. Dykes Medal winner. Fine rose color. 40''	.35
ROYAL COACH. A real yellow plicata edged brown. 36''	1.00

ROYAL SALUTE. A fine deep blue purple. 38''	.25
SANDALWOOD. Soft tan, cream in coffee color. 38''	.60
SANDIA. Tall clean sandy pink. 40''	.25
SAN FRANCISCO. A superb large white plicata. 40''	.55
SEA BISCUIT. Glowing wine red edged soft brown. 22''	.25
SELENE. Tall large white. 40''	.15
SHAH JEHAN. Standards pale straw rose falls glow, red brown	.25
SHINING WATERS. Famous sky blue of fine form. 36''	.25
SIEGFRIED. First yellow plicata edged red purple. 46''	.75
SIERRA BLUE. A superb flaring medium blue self. 44''	.25
SIGNAL FIRES. Smokey standards and reddish purple falls. 38''	.50
SIOUX CITY. Mammoth heliotrope blue. 38''	1.00
SIR KNIGHT. Large blue purple. Fine. 38''	.15
SITKA. Large crisp white. 36''	.25
SNOW KING. All that could be asked for in a white. 38''	.50
SPOKAN. Tall and large red brown. 36''	.25
SPRING PROM. Fine flaring primrose yellow. 38''	.75
SUMMER CLOUDS. Lovely soft cloudy blue. Very fine. 38''	.25
SUMMER TAN. Really fine tan bicolor. Darker reddish tan falls	.25
SUNMIST. Tall creamy yellow. 38''	.25
THE RED DOUGLAS. One of the finest of reds. Dykes winner.	1.50
TIFFANY. Another fine yellow plicata edged reddish lilac.	1.00
THOMAS OTOE. Giant blackish blue. 38''	1.00
TRAILS END. Sandy red brown. Large flowers. 36''	.15
TREASURE ISLAND. Leathery looking golden yellow. 38''	.50
VALIANT. Fine reddish Iris tinged purple. 36''	.25
VENUS DE MILO. A very fine white. Good form, substance. 38''	.25
VIOLET CROWN. Large violet self. Well liked. 40''	.50
WASATCH. Plicata, white marked blue. The largest. 40''	.25
WHITE GODDESS. Glistening clear white. Faultless. 38''	1.50
ZAHAROON. Coffee brown. An odd and interesting color. 40''	.15

## TABLE IRIS

BLUE FROST. Fine frosty blue. Nicely shaped small flowers. 30''	.50
KINGLET. A deep golden self. Well branched. 29''	.25
PEWEE. Small perfectly formed white. 26''	.25
SISKIN. Tiny flowered pinard yellow self. 34''	.25
TOM TIT. Dark, yet bright mulberry purple, flaring falls. 20''	.25
WARBLER. A small clear yellow of fine form. 25''	.15
VENDOR. Larger flowered, clear white. Fine form. 24''	.50

## PUMILA, INTERMEDIATE AND FALL BLOOMERS

AZUREA. Dwarf clear sky blue	.15
COZETTE. Perfect white intermediate. Very fine.	.25
CHROMYLLA. Latest of Intermediates. Clear yellow.	.25
CRYSORO. Clear deep luminous yellow. Inter.	.15
E. ROOSEVELT. Fall bloomer. Deep purple. Fine.	.25
E. HUNTINGTON. Sport of Zua. Crinkled deep blue.	.25
FROST QUEEN. Clear frosty white fall bloomer	.25
GOLDEN BOW. Fine yellow Inter. Good form.	.15
JEAN SIRET. Dwarf and Fall bloomer. Yellow	.25
RED ORCHID. Violet Carmine. A good red Inter.	.15
PAPIO. Dark red purple Intermediate. Fine.	.20
SOUND MONEY. A superb rich yellow ruffled dwarf.	.15
SOUTHLAND. Spring and fall. Bright yellow Inter.	.25
SUSA. Fine purple Intermediate	.25
YELLOW FRILLS. Ruffled yellow dwarf. Light S.	.50
SANGREAL. Fine purple red Fall bloomer	.25
ZUA. Very ruffled white tinged blue. Inter.	.15

## POGOCYCLUS HYBRIDS

BALROUDOUR. Blue S. Falls blue shot grey and red	.10
CONGRES. Ruby red overlaid mahogany on falls, veined throat	.35
DILKUSH. Large violet veined and netted, Black at throat	.20
DORAK. Fine large show flower. S. Ruffled violet. F. Darker	.20
GIRAN. Large wine flowers beautifully veined and marked	.15
GRAY CLOUD. Large flowered. S. Clear blue, F. Marked red	.25
HAMADAN. Ruffled violet, White throat overlaid purple veins	.20
IB PALL. Reddish standards, Violet falls, on white ground	.20
ISMALI. S Reddish Lilac violet veined. F. Red with Purple V	.25
LADY LILFORD. Large showy violet blue veined black	.20
MOHRSON. Immense violet deeper veining	1.00
MONS. STEICHEN. Iridescent white veined lavender red.	.20
NAZARIN. Purple violed with darked falls	.15
ONCA. Tall pale blue veined brighter blue	.50



PESHAWAR. Lovely large plum red or red purple, very smooth	.25
SEMELE. Sky blue ruffled falls flushed red and purple . . . . .	.25
SHIRAZ. Uniform bright violet falls veined deeper . . . . .	.25
SHUSHAN. S. Bright violet. F. Mahogany. Very distinctive ..	.25
STORMY DAWN. Soft blue grey flushed reddish purple . . . . .	.25
WILLIAM MOHR. Gigantic gray blue veined violet . . . . .	.25
ZWANENBERG. Soft velvety tan flushed olive green . . . . .	.20

## FINE TEN CENT IRIS

AKSARBEN. Odd cream penciled maroon	
AL-LU-WE. Fine creamy yellow and red variegatas	
ALTA CALIFORNIA. Tall yellow	
ANDANTE. Red purple	
BEOTIE. Grayish blue	
BLACKAMOR. Dark velvety black purple	
BLUE MONARCH. Dark grey blue	
BLUE RIBBON. Superbly branched blue	
BLUE WAVES. Lovely bright blue	
BRUNO. Fine brown purple bitone	
BUTO. Blue bicolor dark and fine	
CLARA NOYES. Honey colored blend ruffled	
CHARTIER. Fine white	
CROWN PRINCE. Soft blue bicolor	
DESERT GOLD. Fine early yellow	
EDGEWOOD. Tall bluish pinktoned giant	
ELEANORE BLUE. A very fine blue self	
EVELYN BENSON. A dark rose pink self	
EVOLUTION. A soft blue blend	
GLOWING EMBERS. Dull glowing lighter veined red purple	
GOLDEN FLARE. A brilliant golden blend.	
GOLDEN LIGHT. A soft pinkish golden self	
GRACE STURTEVANT. A dark purple brown bitone	
HERNANI. A lovely raisin red purple	
INDIAN CHIEF. Famous red bicolor	
INDIGO BUNTING. A real Indigo blue	
IRMA POLLOCK. Almost a red self	
JERRY. Still one of our reddest Iris	
KING JUBA. Yellow and red variegata.	
KING TUT. The famous old red of Sass	
KLAMATH. A giant blue violet, darker falls	
MELCHOIR. A fine red self	
MIDGARD. Sass famous ruffled blend	
MISS BLUE. Fine flaring blue self	
MOUNT ROYAL. A bold large blue bitone	
MRS. VALERIE WEST. A fine red brown bicolor	
NENE. A purple giant. One of the largest of all.	
NEON. A fine Carmine and gold Iris	
OMAHA. Fine rose self	
RAMESES. A large pink, yellow and rose blend	
RED DOMINION. A really fine red toned flower	
SACHEM. Red toned purple	
SANTA BARBARA. A famous flaring blue self	
SEA DAWN. Lovely clear blue	
SENSATION. Another clear blue. Tall	
SEOSTRIS. A fine bicolor purple brown	
SHIRVAN. A bright brownish red, overtone orange	
SIR GALAHAD. An early giant blue, darker falls.	
SPRING MAID. Pink and gold blend	
TALISMAN. Honey and apricot gold blend	
TENEBRAE. Stiff flaring purplish black	
THE BLACK DOUGLAS. Famous velvety black blue	
THURATUS. A really black self	
TIGER-TIGER. A brilliant orange and red bitone	
ZULU. Tall heavy blue bicolor	
ZUNI. Red brown toned gold	

---

**SPECIAL OFFER NO. 1—Any 15 of 10c Varieties \$1.00**  
**SPECIAL OFFER NO. 2—Any 15 of 25c Varieties \$2.00**

---

**TERMS:** Cash with order. Postage Prepaid on orders of \$2.00 or more. Less than \$2.00 add 15 cents for postage and packing. Iowa customers please include Sales Tax.

**WE GUARANTEE** our stock strong, healthy Rhizomes, true to name and to reach you in first class condition. Please order early. We do not substitute unless advised to do so. Write for quantity discounts and rates on collections. We recommend July and August planting.

— Member American Iris Society —



— 1942 PRICE LIST —

Choice Hardy

Selected

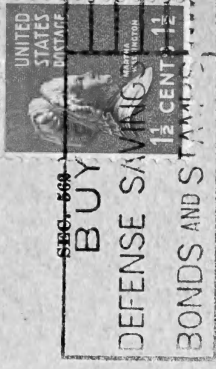
# IRISES



*Fleur De Lis Gardens*

C. W. TOMPKINS

3110 Lakeport Road      Sioux City, Iowa



5860-569

BUY

DEFENSE SAVINGS

BONDS AND STAMPS

To

*C. E. J. Gersdorff*

*1825 No. Capital Street*

*Washington, D.C.*

